

**DISTRICT CROSS COUNTRY MEET
CLASSES 4 and 5 - DISTRICT 2**



DATE: Saturday, November 2

LOCATION: Bolivar Municipal Golf Course

1710 W Broadway, Bolivar, MO 65613.

Enter course at the Community Center.

***Address will take you to the Bolivar Community Center;
parking and start line is directly south of the Community
Center.***

ADMISSION: \$6.00 for those fans six (6) and over

MANAGER: Bolivar High School - Ron Bandy Cross Country Coach
Cell # 417-343-8687
Email - rbandy@bolivarschools.org

SCHEDULE:	7:30am	Course open for inspection _(weather permitting)
	8:00am	Packet pickup
	9:20 am	Coaches meeting
	9:30am	Color Guard National Anthem
	10:00 am	Class 4 Girls
	10:30 am	Class 5 Girls
	11:00 am	Class 4 Boys
	11:30 am	Class 5 Boys
	12:00 pm	Alternate race
	12:30pm	Awards Presentation Class 4
	12:50pm	Awards Presentation Class 5

STARTERS - Jason Pyrah, Jeff Baressa, Dan Pollock,

SPECTATOR PARKING INSTRUCTIONS:

Parking will stretch from the entrance of the course to the community center.

**There will be parking on both sides of the access road. Lines should be painted
weather permitting. There should be parking attendants. There will be an area**

set up and marked for handicap parking right at the entrance to the course/team camp area by the ball diamonds.

Bus Parking: As you enter the venue we will be parking buses / vans at the very back, west side. This will actually be pretty close to the racing and team camps, by the fire training building.

Directions: Enter the course at the main entrance of the Community Center.

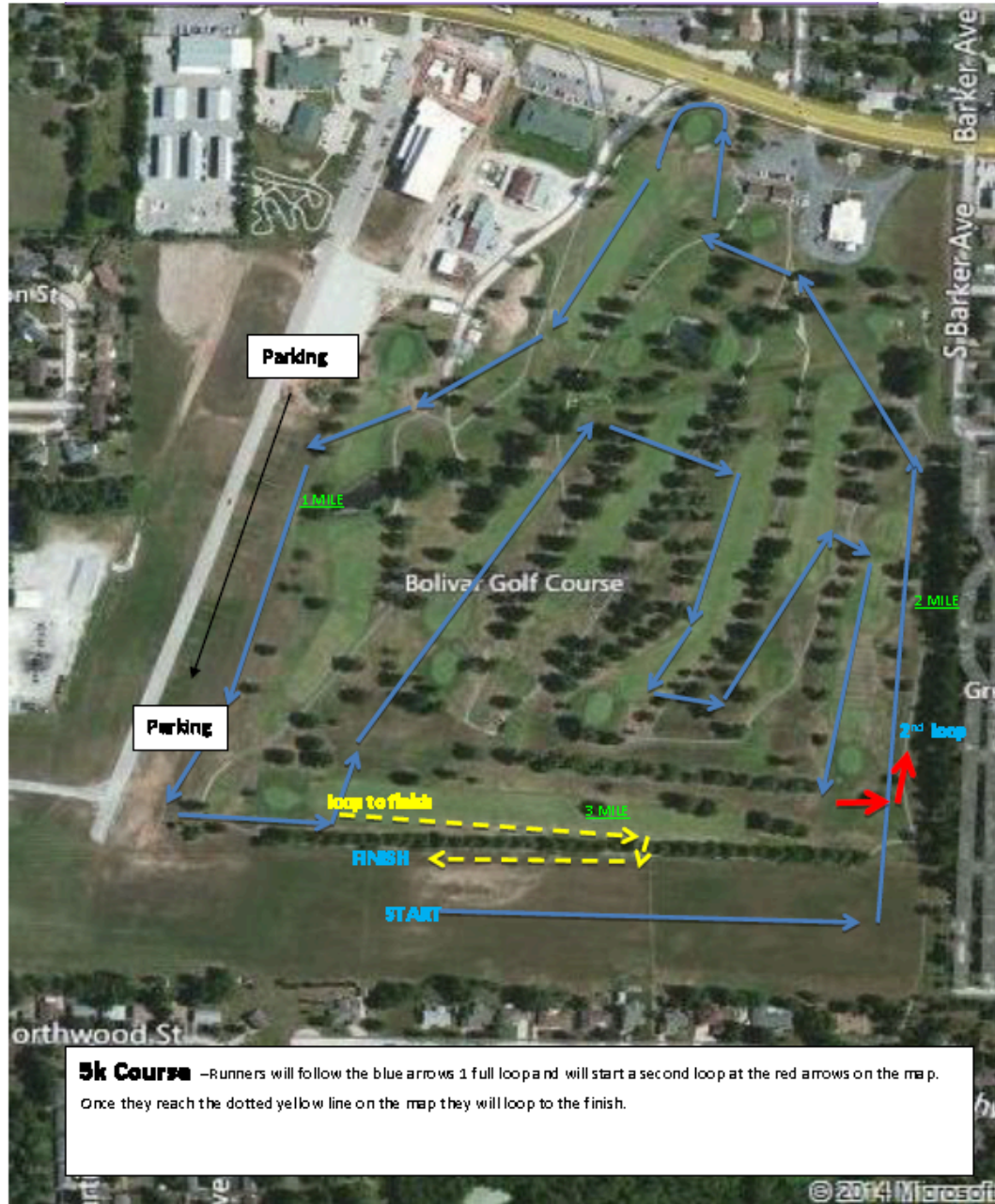
From South - Take North Hwy 13 to Main Bolivar Exit. Exit on Hwy 32 heading East (right turn). The YMCA will be on your right. Just after Meeks.

From North - Take South Hwy 13 to Main Bolivar Exit. Exit on Hwy 32 heading East (left turn). The Bolivar Community Center will be on your right. Just after Meeks.

Entering Bolivar on 32 from the East - Follow HWY 32 West all the way through town square. The Bolivar Community Center is roughly a half mile from the square on your left. Just after the Municipal Golf Course and the Library. Do not enter the Golf Course main entrance. The meet is in the back of the course and Bolivar Community Center.

Course: Course is grass with several cart path crossings. Course is mostly flat and course map in link below. The course will be open from 7:00 am until race time. Weather permitting.

[High School](#) 5k map



5k Course –Runners will follow the blue arrows 1 full loop and will start a second loop at the red arrows on the map. Once they reach the dotted yellow line on the map they will loop to the finish.